



LIFEPHARM®

LIFEPHARM'S STRATEGY FOR SUCCESS

THE POWER OF 3 BONUS

AUGUST 1, 2023 - JUNE 30, 2025

AUGUST 1, 2023 - JUNE 30, 2025

WHY THE POWER OF 3 BONUS?



It's the perfect strategy to maximize the LifePharm Compensation Plan full potential.



Create a growing network. Simply start with 3 individuals, who each refer 3 more, and so on.



Earn up to \$730 from 11 bonuses in LifePharm's Compensation Plan.*



Earn an additional \$1,500 by completing a Power of 3, bringing your total potential income to \$2,230.*

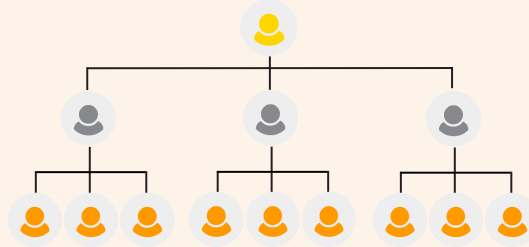
*LifePharm does not guarantee income and all commissions and bonuses are based on IBOs meeting specific activity and performance requirements.

HOW TO EARN



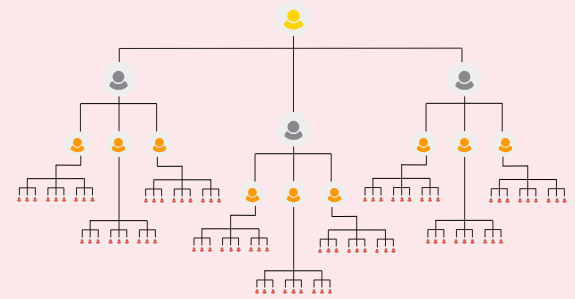
\$50 BONUS

- Have an Auto-Delivery subscription of 100 CV
- Have a 3 IBOs with 100 CV Auto-Delivery each*
- Have 600 total CV coming from you and your first level



\$250 BONUS

- Meet all requirements for \$50 Bonus.
- Have 3 of your personally enrolled IBOs earn the \$50 Bonus



\$1,500 BONUS

- Meet all requirements for \$250 Bonus
- Have 3 of your personally enrolled IBOs earn the \$250 Bonus

*You are eligible to enroll a new IBO to count as your 3 personally enrolled Auto-Delivery requirement, as long as they enroll with a minimum of 100 CV and set up an Auto-Delivery order of 100 CV at the time of sign-up.

SUPERCARGE YOUR EARNINGS WITH **THE POWER OF 3 PACKS**

Choose from three Power of 3 pack categories





- ✓ Foundation Packs helps build your base
- ✓ Power Packs for continuous growth
- ✓ Go Fast Packs to accelerate your success

These packs help maximize your earning potential and come with

- ✓ Packed with exclusive discounts
- ✓ Free products
- ✓ Rank advancement to Premier rank

POWER PACK PERKS

Discover the perfect pack to fuel your Power of 3 team.

	FOUNDATION PACKS	POWER PACKS	GO FAST PACKS
Enrollment and Wholesale Savings	10%	10%	Up to 15%
Auto-Delivery Savings	18%	18%	Up to 18%
Rewards Points	✓	✓	✓
 Free REFIVE (10-count) Sample Box Available for Enrollment only	×	✓	✓
 Free LAMIDERM APEX (15 mL) Available for Enrollment only	×	×	✓
 Business Event Kit New IBOs who enroll will get a digital Business Event Kit to effortlessly host your own LifePharm meetings	×	×	✓
 Premier Rank for 12 Months IBOs who enroll or purchase with the Go Fast Pack will receive Premier Status for 12 months.*	×	×	✓

*To maintain Premier rank status, participants must sustain a minimum of 50 PV and 300 GV per month. Failure to meet this requirement will result in disqualification of Premier rank status for that month.

FIND THE BEST PACK FOR YOUR FINANCIAL SUCCESS

COMPENSATION PLAN BONUS TYPE	FOUNDATION PACKS	POWER PACKS	GO FAST PACKS
Fast Start Bonus	15%	15%	15%
Break Even Bonus	10%	10%	10%
Matrix Bonus	N/A	N/A	10 Levels/30%
Matrix Match Bonus	N/A	N/A	20%
Coded Bonus	N/A	N/A	10%
Coded Match Bonus	N/A	N/A	5 Generations/50%
Business Builder Bonus	N/A	N/A	2% - 11%
Team Leader Bonus	N/A	N/A	2.5%
Global Ambassador Bonus	N/A	N/A	3% - 5%
Rank Rewards	N/A	N/A	\$250 - \$250.000
Car Bonus	N/A	N/A	\$250 - \$4.000

ADVANTAGES OF THE GO FAST PACK

- ✓ Accelerate your earnings by an incredible 175%*
- ✓ Advance to Premier rank for 12 months without needing to enroll 10 people**

*Based on a 6-month simulation (see previous slide 9)

**To maintain Premier rank status, participants must sustain a minimum of 50 PV and 300 GV per month. Failure to meet this requirement will result in disqualification of Premier rank status for that month.

GO FAST EARNINGS ADVANTAGE

	YOUR EARNINGS WITHOUT THE GO FAST PACK			YOUR EARNINGS WITH THE GO FAST PACKS		
	Compensation Plan Earnings	Power of 3 Bonus	Total	Compensation Plan Earnings	Power of 3 Bonus	Total
Month 1	\$79.50	\$50	\$129.50	\$91.50	\$50	\$141.50
Month 2	\$123.00	\$250	\$373.00	\$141.00	\$250	\$391.00
Month 3	\$320.70	\$1,500	\$1,820.70	\$729.70	\$1,500	\$2,229.70
Month 4	\$968.70	\$1,500	\$2,468.70	\$1,927.70	\$1,500	\$3,427.70
Month 5	\$2,756.70	\$1,500	\$4,256.70	\$9,522.20	\$1,500	\$11,022.20
Month 6	\$6,834.60	\$1,500	\$8,334.60	\$29,221.85	\$1,500	\$30,721.85
		Total	\$17,383.20		Total	\$47,933.95

*Based on a 6-month simulation (see previous slide 9)
LifePharm does not guarantee income and all commissions and bonuses are based on IBOs meeting specific activity and performance requirements.

FOUNDATION PACKS



STAMINA FOUNDATION PACK

- 1 LAMININE (120-count)
- 1 OMEGA+++ (30-count)

SAVE
10%

ENROLLMENT/WHOLESALE

\$158
120 CV

SAVE
18%

AUTO-DELIVERY

\$150
120 CV



WELLNESS FOUNDATION PACK

- 1 LAMININE (120-count)
- 1 DIGESTIVE+++ (30-count)

SAVE
10%

ENROLLMENT/WHOLESALE

\$155
120 CV

SAVE
18%

AUTO-DELIVERY

\$145
120 CV



CLEAR FOUNDATION PACK

- 1 LAMININE (120-count)
- 1 IMMUNE+++ (30-count)

SAVE
10%

ENROLLMENT/WHOLESALE

\$155
120 CV

SAVE
18%

AUTO-DELIVERY

\$145
120 CV

POWER PACKS



STAMINA POWER PACK

- 1 LAMININE (120-count)
- 2 OMEGA+++ (30-count)
- 1 **Free** REFIVE Sample Pack (10-sachets)*

SAVE
10%

ENROLLMENT/WHOLESALE

\$190

150 CV

SAVE
18%

AUTO-DELIVERY

\$175

150 CV



WELLNESS POWER PACK

- 1 LAMININE (120-count)
- 2 DIGESTIVE+++ (30-count)
- 1 **Free** REFIVE Sample Pack (10-sachets)*

SAVE
10%

ENROLLMENT/WHOLESALE

\$186

150 CV

SAVE
18%

AUTO-DELIVERY

\$170

150 CV

*Available for Enrollment only. While Supplies Last.

POWER PACKS



CLEAR POWER PACK

- 1 LAMININE (120-count)
- 2 IMMUNE+++ (30-count)
- 1 **Free** REFIVE Sample Pack (10-sachets)*

SAVE 10% **ENROLLMENT/WHOLESALE**
\$186
150 CV

SAVE 18% **AUTO-DELIVERY**
\$170
150 CV



TRANSFORMATION POWER PACK

- 2 LAMININE (30-count)
- 1 DIGESTIVE+++ (30-count)
- 1 EXTRIM SHAPE (60-count)
- 1 CellNergy Wellness Power Cream
- 1 **Free** REFIVE Sample Pack (10-sachets)*

SAVE 10% **ENROLLMENT/WHOLESALE**
\$181
150 CV

SAVE 18% **AUTO-DELIVERY**
\$165
150 CV

*Available for Enrollment only. While Supplies Last.

GO FAST PACKS



GO FAST PROMOTE, PROLONG, PROVIDE PACK

- 1 Cellnergy Wellness Device
- 1 LAMININE (120-count)
- 2 OMEGA+++ (30-count)
- Premier status for 12 months*
- 1 Digital Business Event Kit**
- 1 **Free** REFIVE Sample Pack (10-sachets)**
- 1 **Free** LAMIDERM APEX (15 mL)**
- 1 **Free** Cellnergy Device Stand

SAVE 15%
ENROLLMENT/WHOLESALE
\$478
 339 CV

AUTO-DELIVERY
N/A



GO FAST POWERHOUSE PACK

- 1 LAMININE (120-count)
- 1 OMEGA+++ (120-count)
- 1 DIGESTIVE+++ (120-count)
- 1 IMMUNE+++ (120-count)
- Premier status for 12 months*
- 1 Digital Business Event Kit**
- 1 **Free** REFIVE Sample Pack (10-sachets)**
- 1 **Free** LAMIDERM APEX (15 mL)**

SAVE 10%
ENROLLMENT/WHOLESALE
\$448
 326 CV

SAVE 15%
AUTO-DELIVERY
\$425
 343 CV

*To maintain Premier rank status, participants must sustain a minimum of 50 PV and 300 GV per month. Failure to meet this requirement will result in disqualification of Premier rank status for that month.

**Available for Enrollment only. While Supplies Last.

FAQs

Q: What is the time-period to earn each bonus?

A: Each bonus qualification must be completed within the calendar month.

Q: Can I enroll someone who resides in a different market and how will it affect my bonuses?

A: You can enroll someone who resides in a different market as long as the market is eligible for this promotion.

Q: If I have 2 existing Personally Enrolled IBO with 100 CV Auto-Delivery, can I enroll a new IBO to be counted towards my 3 IBO requirement?

A: Absolutely! You can enroll a new Personally Enrolled IBO to be counted towards your 3 IBOs requirement. However, it's important to note that to be eligible, the new personally enrolled IBO must be enrolled with a minimum of 100 CV. Additionally, the new IBO must set up an Auto-Delivery order of 100 CV or more at the time of enrollment. This ensures that they meet the necessary criteria to contribute towards your qualification for the Power of 3 promotion.

Q: Does my new personally enrolled new IBO need to have their Auto-Delivery order processed within the same month of their enrollment month?

A: Your new personally enrolled IBO's Auto-Delivery does not need to be processed within the same month of their enrollment month. They must have a minimum of 100 CV Auto-Delivery set up at time of enrollment.

Q: If I have qualified to earn the \$ 50 bonus by meeting the requirements in August, can I use the same 3 IBOs to earn another \$50 bonus the following month?

A: Yes, you can use the same set of 3 Personally Enrolled IBOs to earn another \$50 bonus in the next month. However, to qualify for the bonus, it is essential that your existing Personally Enrolled IBOs maintain an Auto-Delivery order of 100 CV or more in the subsequent month. This ensures their continued eligibility for the bonus.

Q: Can I have more than one Auto-Delivery order within the same month that equals to 100 CV to qualify?

A: Yes, if you have a minimum of 100 CV from your Auto-Delivery orders, you are eligible to earn from this promotion.



FAQs

Q: How can I track my earnings for this promotion?

A: Log into your Virtual Office and click on the Power of 3 Tracker banner to see your earning qualification.

Q: How is the total earning potential of \$2,230 calculated when combining the Compensation Plan and the Power of 3 promotion?

A: The total earning potential of \$2,230 is derived from combining the earnings from the Compensation Plan and the Power of 3 bonus.

HERE'S HOW IT IS CALCULATED:

1. Compensation Plan Bonus:

The \$730 cash bonus mentioned is the cumulative earning potential from the 11 ways you can earn through the Compensation Plan. This amount assumes that you have 3 new Personally Enrolled IBOs on an Auto-Delivery subscription of 150 CV each.

2. Power of 3 Bonus:

In addition to the Compensation Plan earnings, the Power of 3 offers a bonus of up to \$1,500.

Here is a breakdown of the earnings from each Compensation Plan bonuses:

Bonus	August	September	October
Fast Start Bonus	\$68		
Break Even Bonus		\$45	\$45
Matrix Bonus	\$9	\$45	\$180
Matrix Match Bonus		\$4	\$23
Coded Bonus	\$15	\$45	\$105
Coded Match Bonus		\$2	\$10
Business Builder Bonus			\$117
Team Leader Bonus			
Global Ambassador Bonus			
Cash Bonus			\$250
Car Bonus			
Total	\$92	\$141	\$730

Please note that the actual amounts from each bonus may vary based on individual performance, the specific terms and conditions of LifePharm's Compensation Plan and meeting the Power of 3 Bonus promotion requirements.



FAQs

Q: Are there any additional incentives for purchasing the Power of 3 Packs?

A: No, there are no additional incentives for purchasing the Power of 3 Packs. However, if an existing IBO wants to boost their earning potential, the Go Fast Pack is great for helping you rank up to Premier for 12 months.

Q: Do I need to enroll a new IBO or purchase the Power of 3 Packs to earn the Power of 3 Bonus?

A: No, it is not required to enroll a new IBO or purchase the Power of 3 Packs to earn the Power of 3 Bonus. However, it is recommended as it can help maximize your earning potential.

Q: Can I mix and match products within the Power of 3 Packs?

A: The contents of each Power of 3 Pack are pre-selected to provide optimal benefits and value. Customization is not available, but each pack is designed to suit different business needs and goals.

Q: Why should I subscribe to Auto-Delivery with the Power of 3 Packs?

A: Subscribing to Auto-Delivery with the Power of 3 Packs ensures you never run out of essential products and provides convenience and consistency for your business. Additionally, you can enjoy extra discounts with the Power of 3 Packs on Auto-Delivery.

Q: What are the requirements to maintain Premier rank status, and what happens if they are not met?

A: To maintain Premier rank status, participants must sustain a minimum of 50 PV (Personal Volume) and 300 GV (Group Volume) per month. Failure to meet these requirements will result in disqualification of Premier rank status for that month.

Q: What should I do if a Power of 3 Pack I am interested in is discontinued?

A: If a Power of 3 Pack you are interested in is discontinued, you can explore the remaining available packs for similar benefits. LifePharm regularly updates its offerings to ensure the best value and effectiveness, so there may be new packs that suit your needs.



PROMOTION RULES

- The Power of 3 Bonus promotion is valid from August 1, 2023 to June 30, 2025.
- This promotion is available to IBOs residing in Australia, Canada, European Union, Jamaica, Kazakhstan, New Zealand, Philippines, Russia, Serbia, Switzerland, United Kingdom, and the United States.
- The cash bonus earned from this promotion will be paid out on the 15th of the following month.
- Any IBOs participating in this promotion must have a minimum of 100 CV Auto-Delivery subscription.
- Auto-Delivery orders from your existing Personally Enrolled IBOs of 100 CV or more must be processed in the qualifying month.
- The Power of 3 cash bonus is not cumulative, meaning you may earn either the \$50, \$250 or \$1,500 bonus, but not all three in one month.
- Your eligibility to earn the bonuses resets at the beginning of each calendar month.
- Personal Volume requirement of 600 PV may come from your new or existing IBO/customer orders.
 - Personal Volume (PV): PV is the collection of all CVs (Commission Volume) assigned to the products you purchased or products you sold.
- To qualify for the \$250 bonus, you must first meet the qualifications for the \$50 Bonus. Similarly, to qualify for the \$1,500 bonus, you must first meet the qualifications for the \$250 bonus.
- Once you have completed the entire Power of 3 bonus payout of \$1,500, you are eligible to earn subsequent Power of 3 bonuses. However, any volume or orders that were counted in the first bonus payout will not count toward the additional bonus structures.
- All new enrollments must have a unique address and cannot be the same.
- The cash bonus payout is subject to change upon verification of enrollment to ensure the integrity of this promotion.
- Any products returned during this incentive period are subject to the rules of the standard LifePharm return policy. If an IBO chooses to return their enrollment order, any Withdrawals or Transfers made from the IBO's eWallet from commissions earned during the 60 days between their enrollment date and their refund request date will be deducted from the amount of their return order.
- LifePharm reserves the right to cancel or modify this promotion at any time, with or without notice.

*LifePharm does not guarantee income and all commissions and bonuses are based on IBOs meeting specific activity and performance requirements.

** You are eligible to enroll a new IBO to count as your 3 personally enrolled Auto-Delivery requirement, as long as they enroll with a minimum of 100 CV and set up an Auto-Delivery order of 100 CV at the time of sign-up.